

Port of Skagit

Ports and Cities Working Together

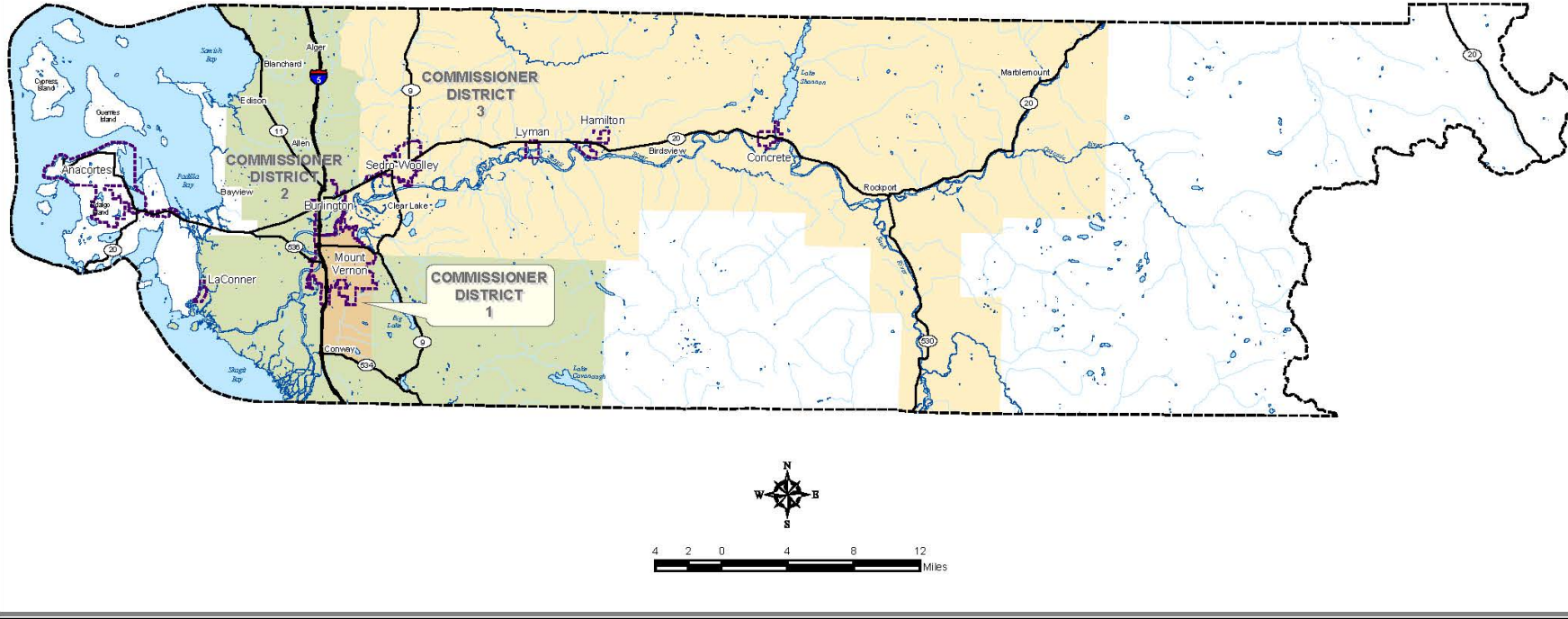
*Shoreline and Coastal Planners Group
April 13, 2017*



About the Port of Skagit: Guided by the mission “Good Jobs for Our Community,” the Port of Skagit owns and operates three key facilities: Skagit Regional Airport, Bayview Business Park and the La Conner Marina. Combined, these three facilities are home to 87 businesses that employ nearly 1,416 people.



Port of Skagit County, Washington Commissioner Districts




LEGEND

- Port Commissioner District 1
- Port Commissioner District 2
- Port Commissioner District 3
- Interstate
- State Route
- County Boundary
- Major Water Body
- River, Creek, or Stream
- Incorporated Area

This map was created from available public records and existing map sources, not from field surveys. Map features from all sources have been adjusted to achieve a "best fit" registration to the Ownership Parcels Map. While great care was taken in this process, maps from different sources rarely agree as to the precise location of geographic features. The relative positioning of map features to one another results from combining different map sources without field "ground truthing."

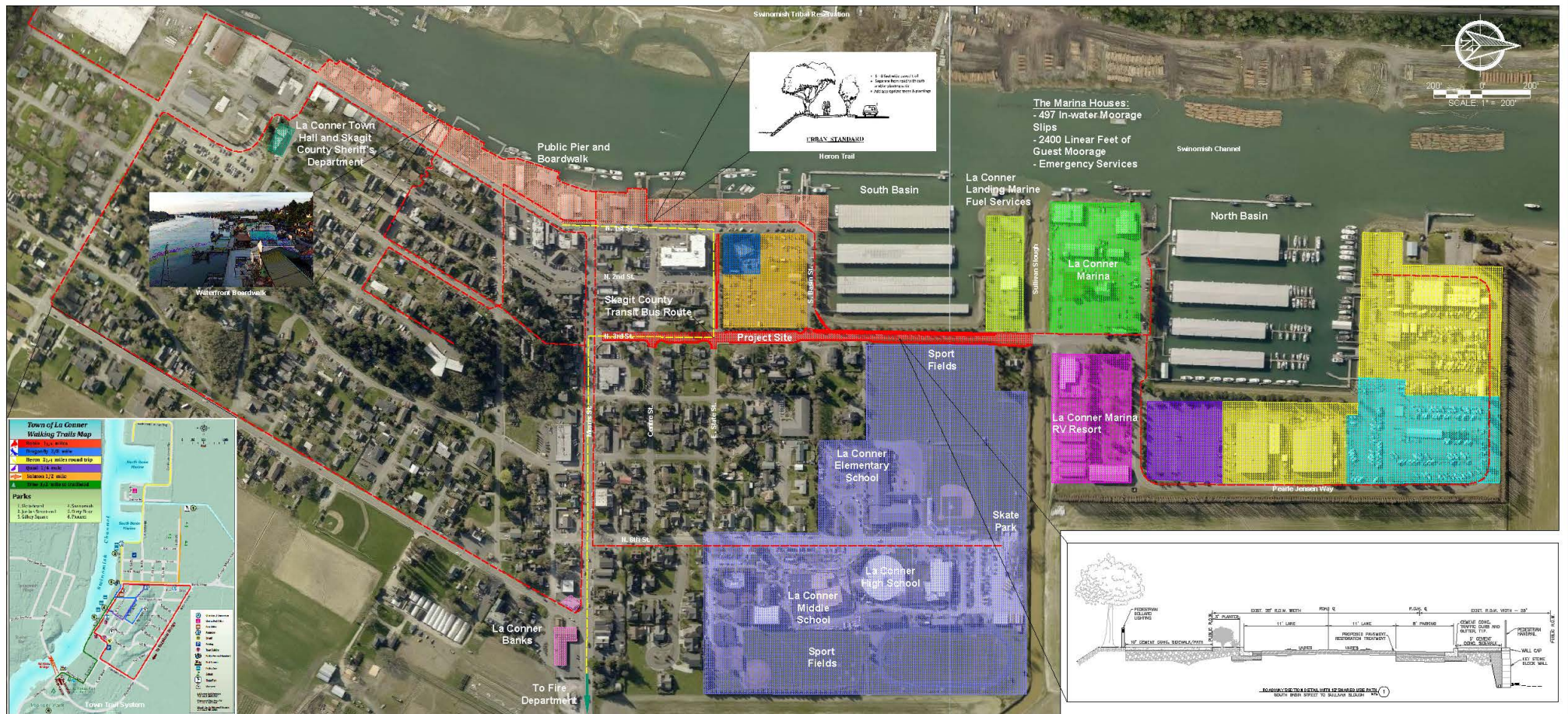
Data Source Information:
County Boundary, Incorporated Areas, Hydrology and Road centerlines are maintained by Skagit County GIS.



Date: 06-10-2009

La Conner Marina





North Third Street Improvements – Morris Street to Port of Skagit Sullivan Slough

NORTH THIRD STREET IS A KEY ARTERIAL ROADWAY PROVIDING THE ONLY VITAL CONNECTION BETWEEN DOWNTOWN LA CONNER AND THE PORT OF SKAGIT FOR TOURISTS, COMMERCIAL AND INDUSTRIAL BUSINESSES, AND EMERGENCY SERVICES. CURRENTLY, THE ROADWAY CONSISTS OF TWO 10-FOOT TRAVEL LANES. INTERMITTENT AND NON-COMPLIANT SIDEWALKS AND PATHWAYS ARE HEAVILY USED, AS THIS CORRIDOR SERVICES MULTIPLE TRAILS AND PEDESTRIAN ROUTES. THIS PROJECT IS A RESTORATION EFFORT THAT WILL UPGRADE PEDESTRIAN ROUTES WITH ADA-COMPLIANT SIDEWALKS AND A 10-FOOT WIDE MULTI-USE PATH TO PROVIDE A COMPLETE, MULTI-MODAL CORRIDOR BETWEEN THE TOWN'S TWO MAIN COMMERCE AREAS. EXISTING DETERIORATING PAVEMENT WILL BE REHABILITATED, THE ROADWAY WILL BE WIDENED TO TWO 11-FOOT LANES, AND THE NEW ROADWAY SURFACE WILL ACCOMMODATE BICYCLES VIA SHARROW MARKINGS. THE PROJECT WILL ALSO MAKE USE OF "COMPLETE STREETS" INITIATIVES PROVIDING FOR PLANNED UTILITY IMPROVEMENTS INCLUDING WATER AND SANITARY SEWER UPGRADES, STORM DRAINS AND LOW-IMPACT WATER QUALITY FEATURES, AND CONDUIT RUNS FOR FUTURE FIBER OPTIC SERVICES LINKING THE COMMUNITY. OTHER PERIPHERAL AMENITIES INCLUDE NEW LED PEDESTRIAN AND STREET ILLUMINATION, INCREASED ON-STREET PARKING, VEGETATED BUFFER STRIPS, LANDSCAPING, STREET FURNITURE, WAY-FINDING SIGNAGE, AND OTHER FEATURES NEEDED TO COMPLIMENT THE IMPROVEMENTS WITH CURRENT SITE CONDITIONS FOR THE MUTUAL BENEFIT OF ALL USERS.

- | | |
|--|--|
| Parking | North Basin Parking |
| Yacht Club | North Industrial Area |
| Dry Boat Storage | School |
| Commercial Uses South | Down Town Waterfront Businesses |
| Commercial Uses North A | Bank |
| Commercial Uses North B | Emergency Services |

SWIFT Center (former Northern State Hospital)

AERIAL OVERVIEW

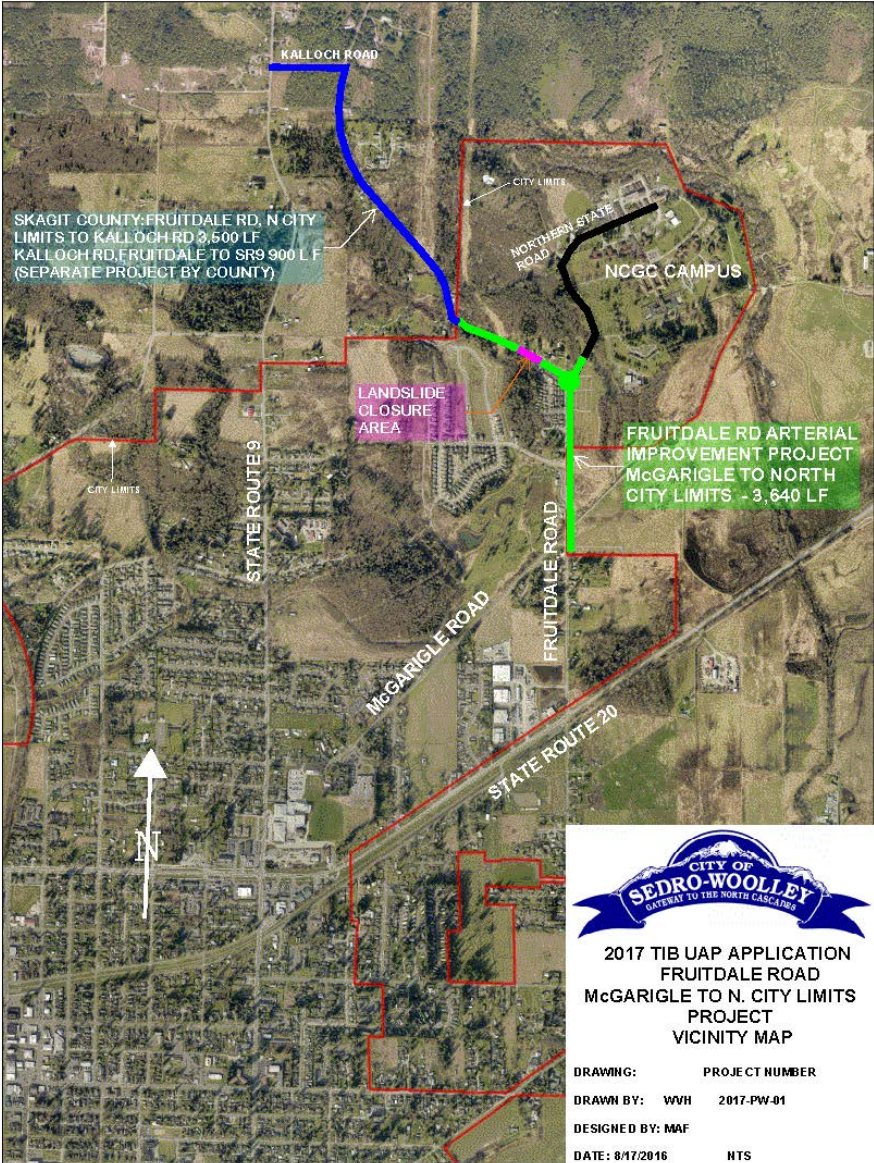
Northern State Site - Sedro-Woolley, Washington



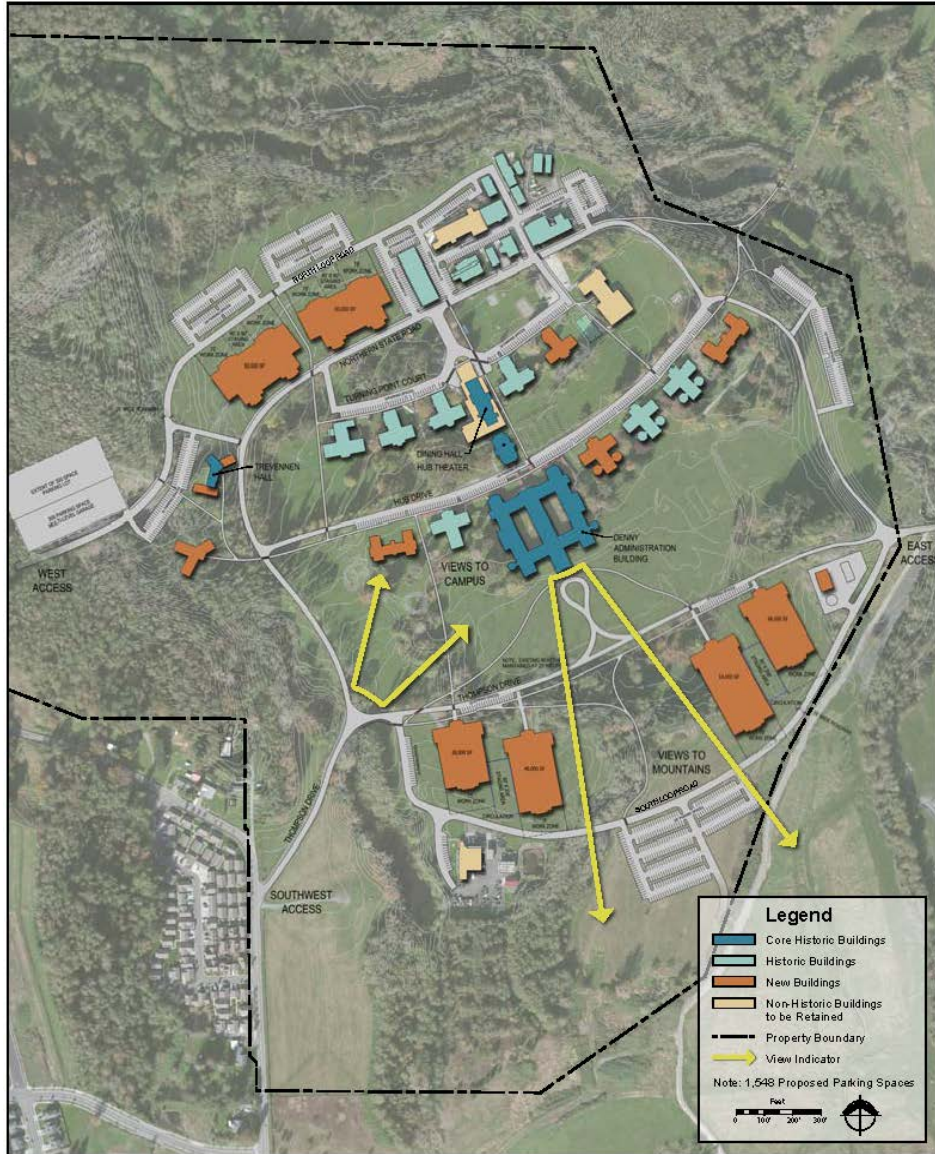
MAUL FOSTER AIGNO
ARCHITECTS



SWIFT Center (former Northern State Hospital)



SWIFT Center (former Northern State Hospital)



Port of
Skagit



- Upper Skagit Tribe
- Economic Development Association of Skagit County
- Skagit Community Foundation
- Office of Governor Jay Inslee
- State Sen. Kirk Pearson and State Rep. Dan Kristiansen (39th District)
- Staff representing federal elected officials
- Washington State Department of Archaeology and Historic Preservation
- Washington State Department of Commerce
- Washington State Department of Ecology
- Washington State Department of Fish and Wildlife
- Washington State Department of Health
- Washington State Department of Social and Health Services
- Washington State Office of Financial Management
- Washington State Recreation and Conservation Office



Lessons Learned

- **Build Relationships**
- **Define Success**
- **Find the “Win – Win”**



Port of Skagit

Questions?

CONTACT:

Heather Rogerson

heather@portofskagit.com

360-757-0011